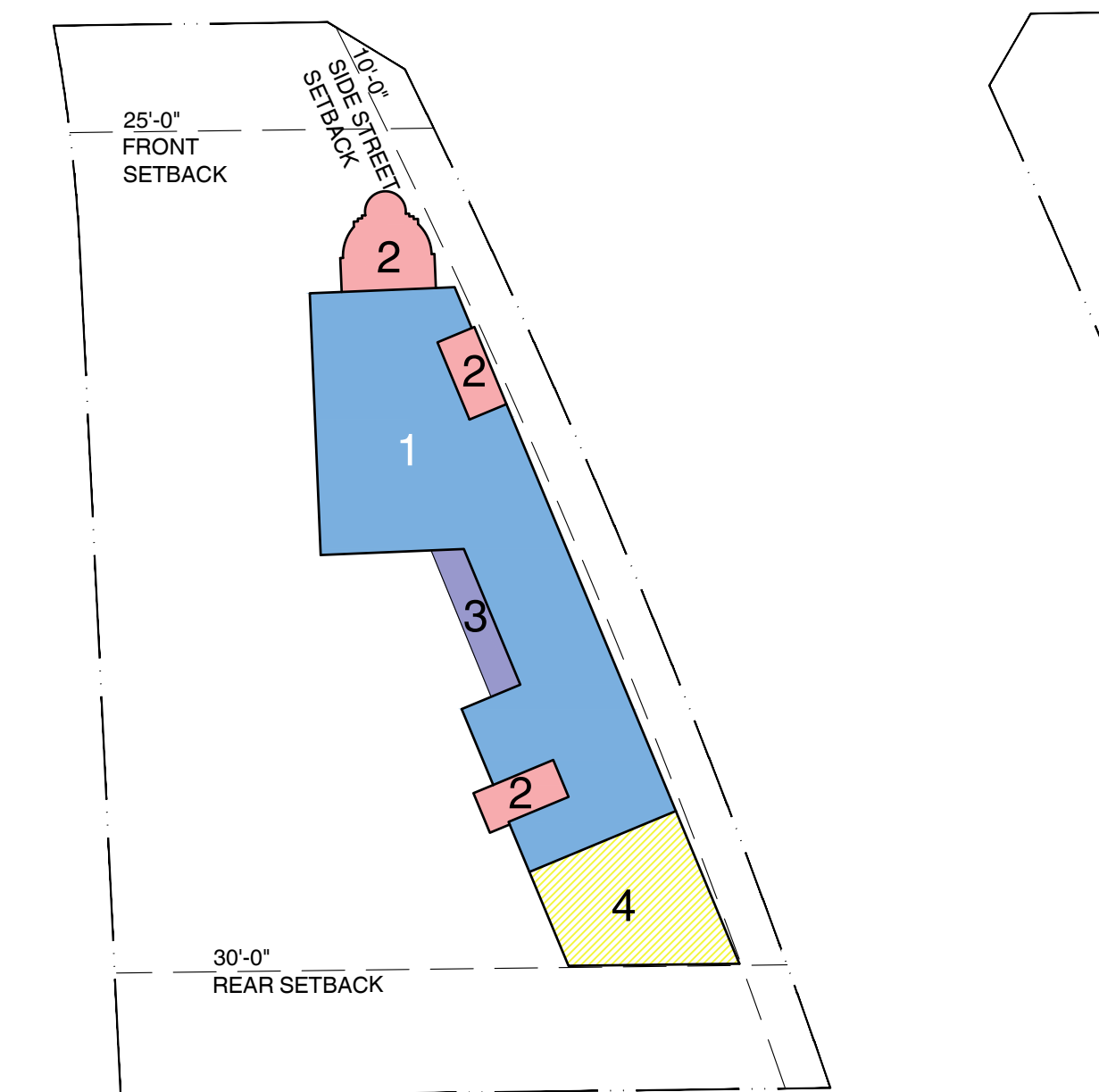


- LEGEND:

1. 30'-0" BUILDING HEIGHT = 15'-6" OF LANDSCAPING BETWEEN BUILDING AND VUA
2. 45'-0" BUILDING HEIGHT = 23'-0" MINUS 50% = 11'-6" OF LANDSCAPING BETWEEN BUILDING AND VUA⁽¹⁾
3. REQUIRED LANDSCAPING BETWEEN BUILDING AND VUA MINUS 50%⁽¹⁾
4. BUILDING ENTRANCE⁽²⁾
5. CAR PORT⁽²⁾
6. DRIVEWAY⁽²⁾
7. VEHICULAR USE AREA 12,750 SF
8. INTERIOR LANDSCAPING 6,282 SF (21.33% OF VUA)

NOTES

1. 155.5203.D.5.A - THE DEVELOPMENT SERVICES DIRECTOR MAY GRANT MODIFICATIONS TO THE REQUIRED LANDSCAPING BETWEEN VEHICULAR USE AREAS AND BUILDING FOR DEVELOPMENT THAT PROVIDE AT LEAST 50% OF THE REQUIRED WIDTH, SUBJECT TO PROVIDING SUPERIOR LANDSCAPE DESIGN THAT INCLUDES A MINIMUM OF TREES OR PALMS AS FOLLOWS...
2. 155.5203.D.5 - NO LANDSCAPE AREA IS REQUIRED ALONG THOSE PARTS OF AN ABUTTING BUILDING FACADE CONTAINING BUILDING ENTRANCES, DRIVEWAYS INTO GARAGES OR CAR PORTS, OR LOADING DOCKS.



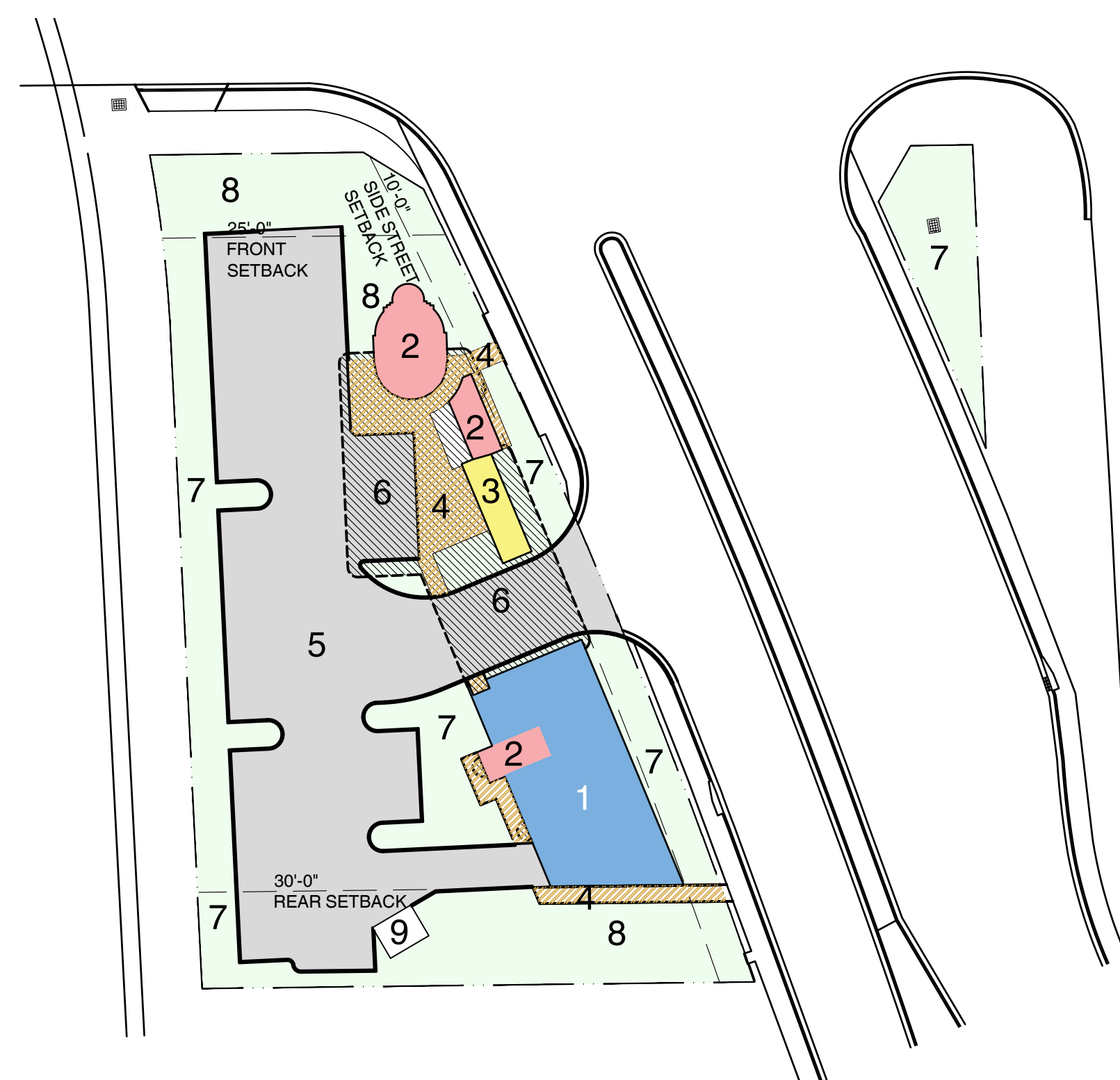
- LEGEND:

- | | |
|----------------------------------|------------|
| 1. OFFICE SPACE | 4,709 sqft |
| 2. EGRESS STAIRS/BUILDING ACCESS | 759 sqft |
| 3. BALCONY | 260 sqft |
| 4. MECHANICAL ROOF SPACE | 1,153 sqft |



- LEGEND:

- | | |
|----------------------------------|------------|
| 1. OFFICE SPACE | 4,233 sqft |
| 2. EGRESS STAIRS/BUILDING ACCESS | 759 sqft |
| 3. BALCONY | 549 sqft |
| 4. OPEN TO WAREHOUSE BELOW | 1,622 sqft |



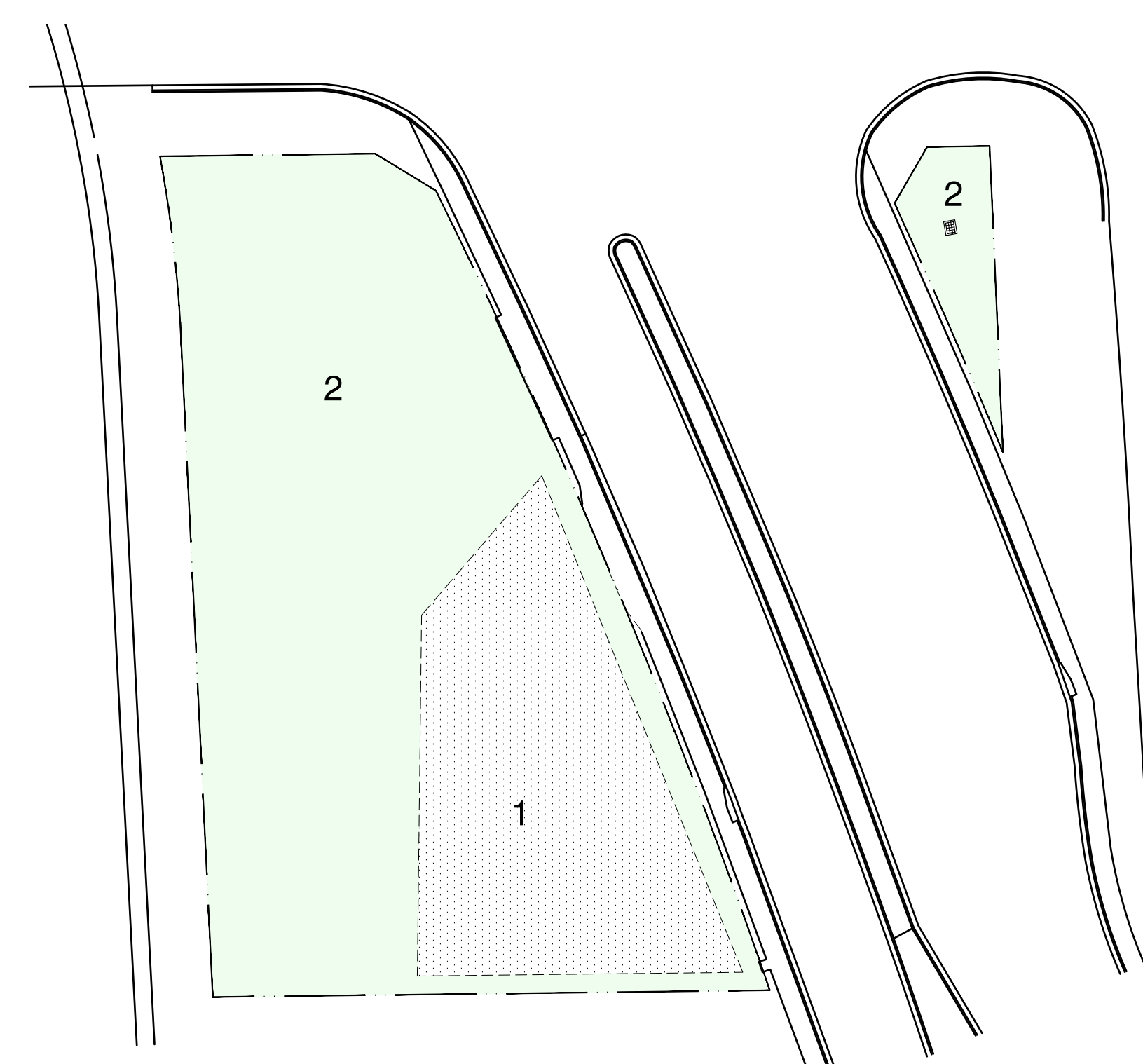
- LEGEND:

- | | |
|----------------------------------|-------------|
| 1. WAREHOUSE | 2,517 sqft |
| 2. EGRESS STAIRS/BUILDING ACCESS | 984 sqft |
| 3. SERVICES | 300 sqft |
| 4. WALKWAY | 1,674 sqft |
| 5. PARKING / DRIVEWAY | 12,750 sqft |
| 6. OPEN SPACE UNDER ROOF | 3,872 sqft |
| 7. LANDSCAPE AREA | 13,345 sqft |
| 8. PROPOSED LANDSCAPED SWALE | 2,700 sqft |
| 9. PROPOSED DUMPSTER | 143 sqft |

TOTAL LOT AREA:
32,017 sqft - 0.74 acres

PROPOSED LOT COVERAGE: (7.673 sqft) 23.97%

PROPOSED PERVIOUS: (13,345 sqft) 41.68%



- LEGEND:

- | | |
|----------------------------|-------------|
| 1. EXISTING PAVEMENT | 9,063 sqft |
| 2. EXISTING LANDSCAPE AREA | 22,954 sqft |

TOTAL LOT AREA:
32,017 sqft - 0.74 acres

LOT COVERAGE: